

Richard E. Mieritz

MINING CONSULTANT

April 1, 1957

Mr. E. G. Frawley
Rm. 340
411 North Central Ave.
Phoenix, Arizona

MADERO PROJECT
PROGRESS REPORT
March 15 to 30, 1957

Dear Mr. Frawley:

Herewith is the semi-monthly report covering activities of the project for the above noted period.

The only activity of concern is the diamond drilling now in progress.

DIAMOND DRILLING

After a short delay, actual drilling of hole No. 1 was started on March 23, 1957. Hole No. 1 is being drilled in a N. 72° E. direction at a minus 4 degree angle at a station about 10 feet back of the face of the 600 foot adit. This hole is being drilled approximately at right angles to the strike foliation of the mineralized schist.

Depth of the hole at the end of the period was 210 feet.

Previous Total	0 feet	210	210
Advance for period	210 feet	10-1	210
Total footage to date	210 feet	11-1	220

DIAMOND DRILL HOLE No. 1

The entire advance for the period has been limited to this hole.

The hole was collared BX size and reduced to AX size at 10 feet. Core recovery varies considerably, from 100 percent to as low as 12 percent. Although I have not arithmetically averaged the recovery, an average of 50 to 55 percent is indicated on the attached assay-core recovery log.

The mineralization thus far penetrated is erratic and is primarily concentrated on fine hair line fractures and to a lesser degree as disseminations. The hole thus far proves that mineralization does extend to some breadth but its tenure is presently sub-marginal.

Madero
Progress Report

Apr. 1, 1957

-2-

An arithmetic average of the core assays for the first 160 feet indicates approximately 0.4% copper content. Only a guess could be made as to the ratio of oxide to sulphide copper thus far encountered.

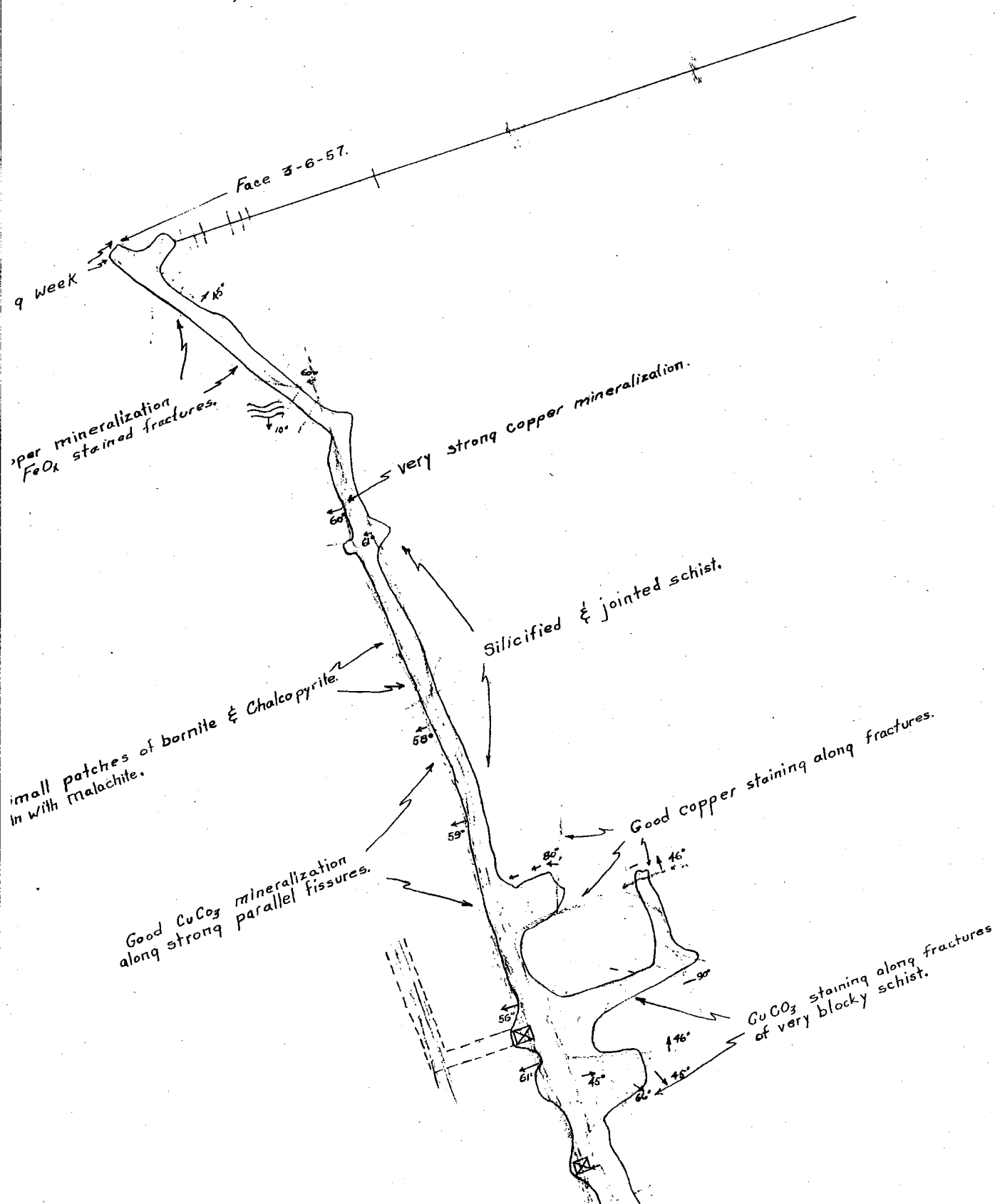
A complete analysis will be made upon completion of the hole.

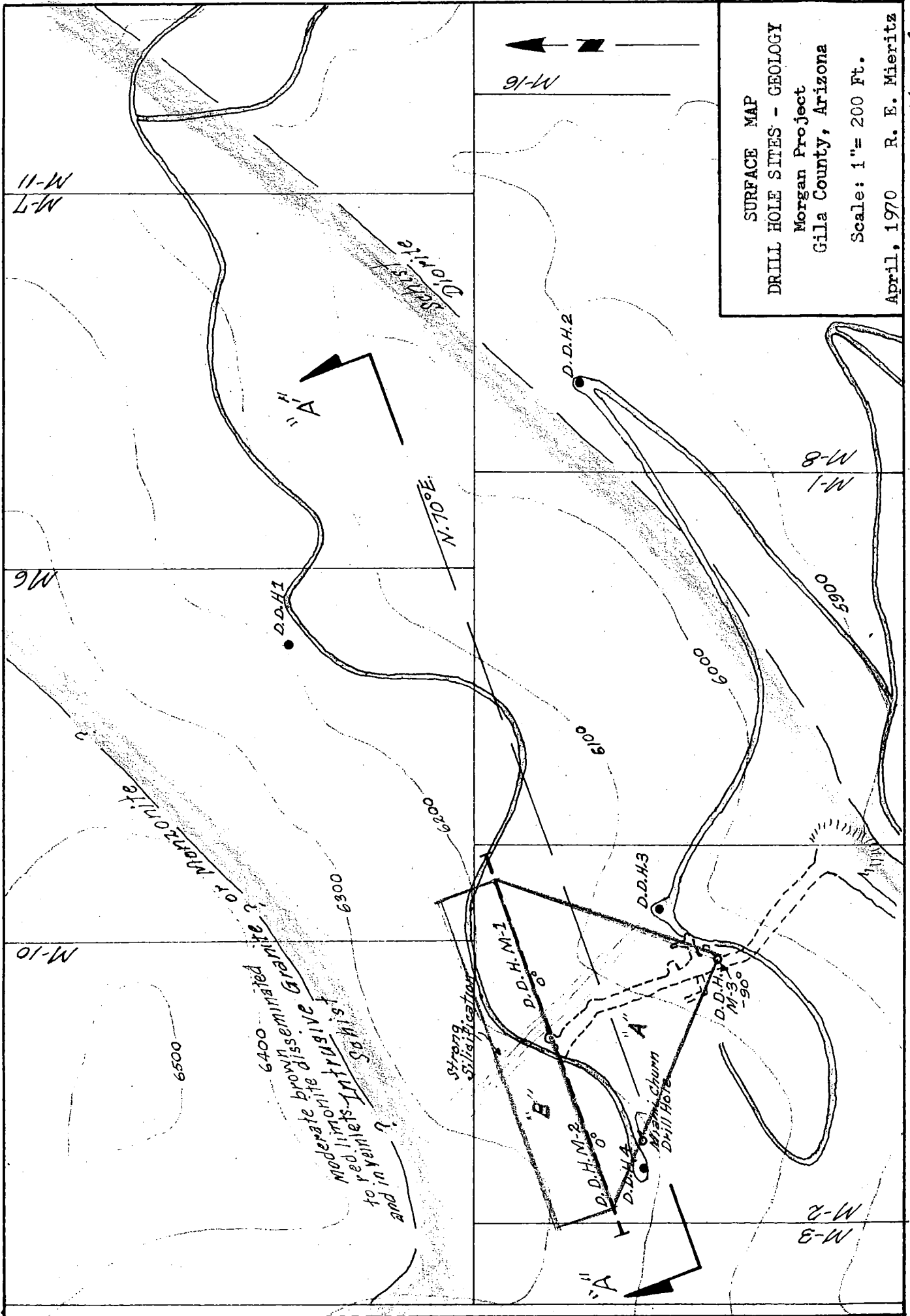
The attached map and assay schedule will indicate the progress made.

Very truly yours,

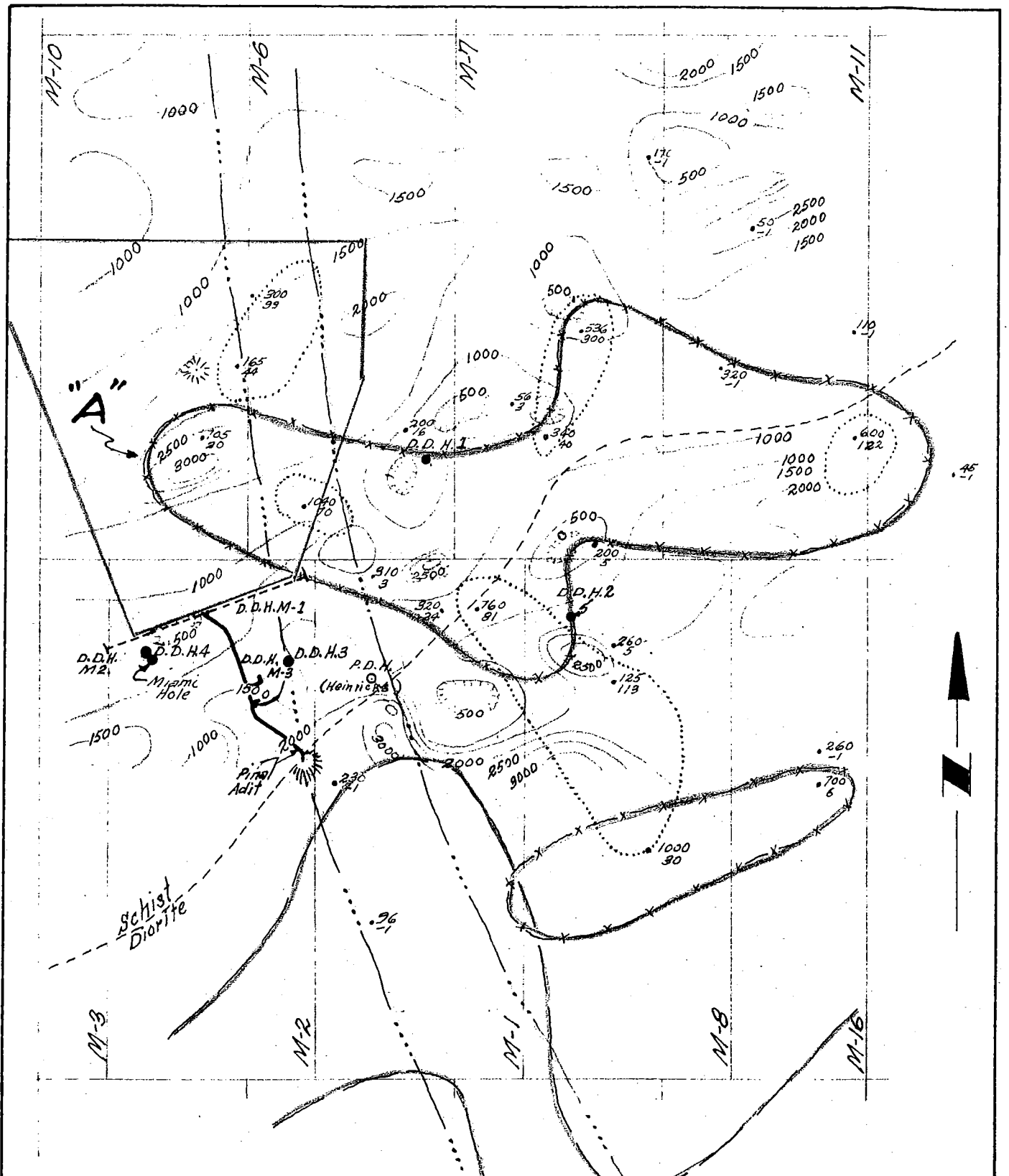
R. E. Mieritz

cc:Manning Cox





SURFACE MAP
DRILL HOLE SITES - GEOLOGY
 Morgan Project
 Gila County, Arizona
 Scale: 1" = 200 Ft.
 April, 1970 R. E. Mieritz
 Map. 1



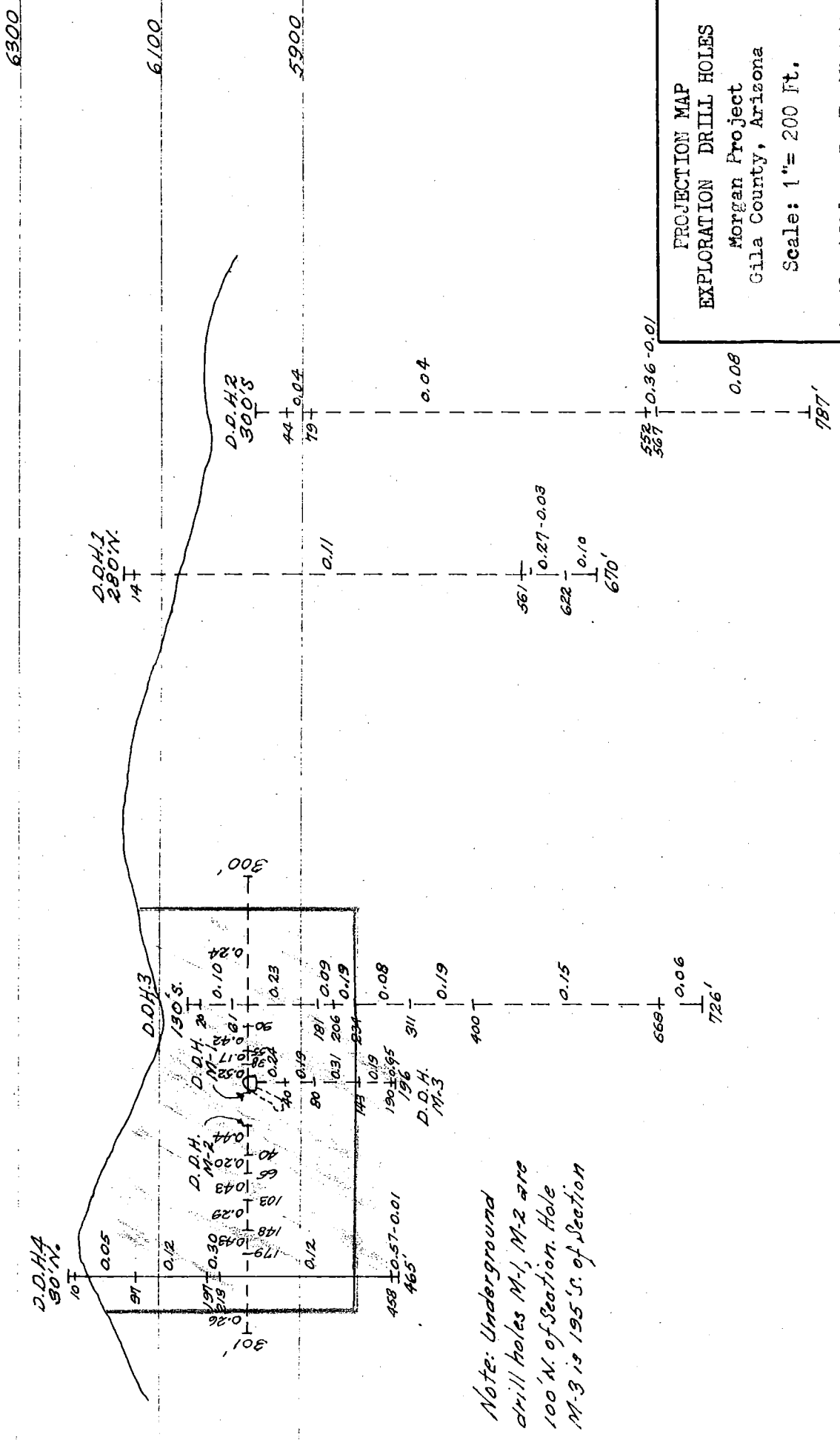
LEGEND

- ⁷⁶⁰/₈₁ Geochem rock chip sample, upper is ppm copper, lower is ppm moly.
- x— Copper Geochem Anomaly, 300 ppm +
- Moly Geochem Anomaly, 30 ppm +
- ~~~~~ Magnetic Anomaly, 500 gamma Interval.
- ~~~~~ I. P. Anomaly, Zone "A" and "B".
- I. P. Anomaly, Zone "C"
- D.D.H.3 E. + E. Surface Drill Holes
- D.D.H.M1 Early Underground Drill Holes.

SUPERIMPOSED
GEOPHYSICAL ANOMALIES
Morgan Project
Gila County, Arizona
Scale: 1" = 400 Ft.

April, 1970 R. E. Mieritz

N.70°E. →



PROJECTION MAP
 EXPLORATION DRILL HOLES
 Morgan Project
 Gila County, Arizona
 Scale: 1" = 200 Ft.
 April, 1970 R. E. Mieritz

Map. 3

Note: Underground
 drill holes M-1, M-2 are
 100' N. of Section. Hole
 M-3 is 195' S. of Section